



MONTHLY MEMBERSHIP PROGRESS REPORT

District 33 A

Results as of: 6/30/2017

GMT: OPEN

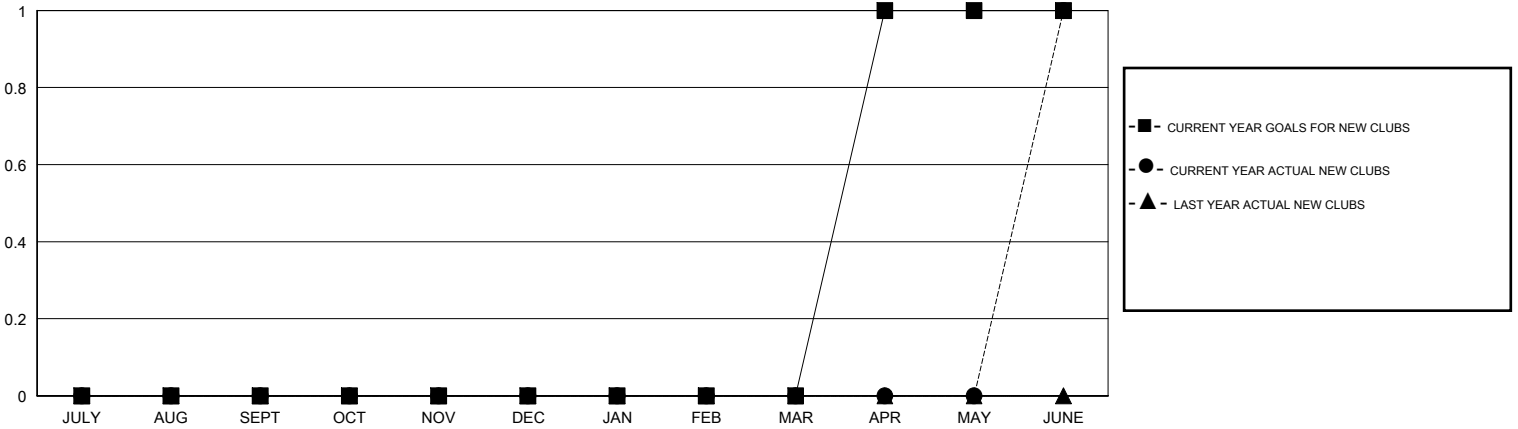
LOCATION MASSACHUSETTS

GMT CA

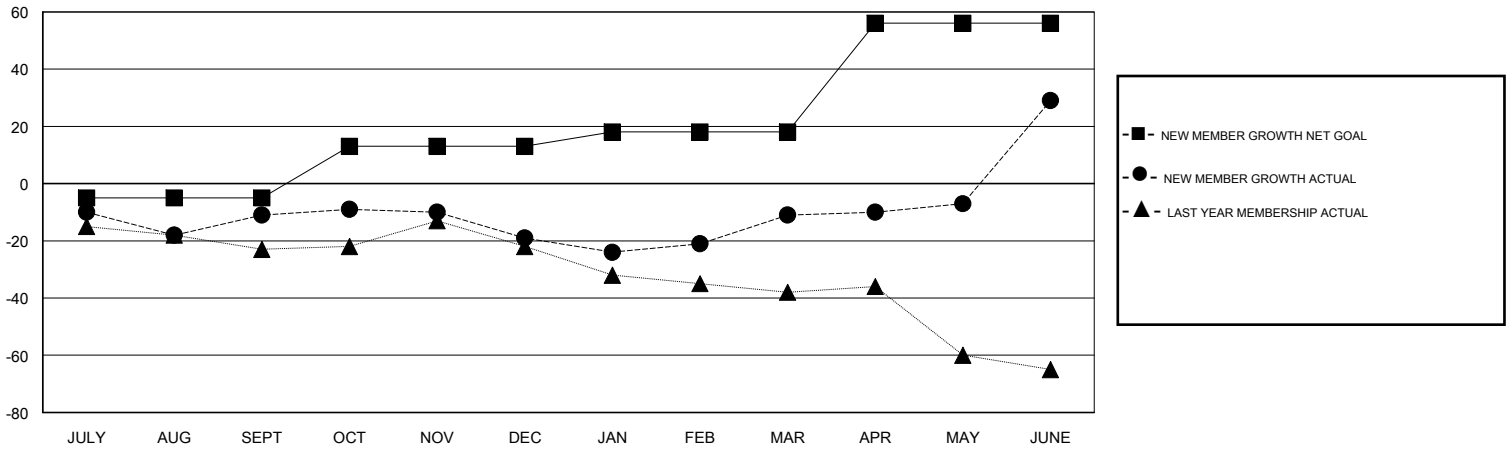
Clubs			
RESULTS FOR 2016-2017			
QUARTER	NEW CLUB GOAL	NEW CLUBS	DROPPED CLUBS
JULY/AUG/SEPT	0	0	0
OCT/NOV/DEC	0	0	0
JAN/FEB/MAR	0	0	0
APR/MAY/JUNE	1	1	0

Members			
RESULTS FOR 2016-2017			
QUARTER	NEW MEMBER GROWTH NET GOAL (not reinstated or transfers)	NEW MEMBER GROWTH ACTUAL (not reinstated or transfers)	DROPPED MEMBERS ACTUAL (including transfers)
JULY/AUG/SEPT	-5	23	34
OCT/NOV/DEC	18	22	30
JAN/FEB/MAR	5	36	28
APR/MAY/JUNE	38	56	16

GOALS AND ACTUAL NEW CLUBS CUMULATIVE



GOALS AND ACTUAL MEMBERS CUMULATIVE



DROPPED CLUBS: 0	34 CLUBS OF 49 ADDED 1 OR MORE NEW MEMBERS	<u>GENDER DISTRIBUTION</u>	
DROPPED MEMBERS		MALE	1,013 (67.94%)
DECEASED	22	FEMALE	478 (32.06%)
CLUB CANCELLED	0	TOTAL FAMILY UNIT MEMBERS	
OTHER	86	305	
TOTAL	108	FAMILY MEMBERS PAYING HALF DUES	
		159	

[CLICK HERE FOR CUMULATIVE MEMBERSHIP DATA](#)